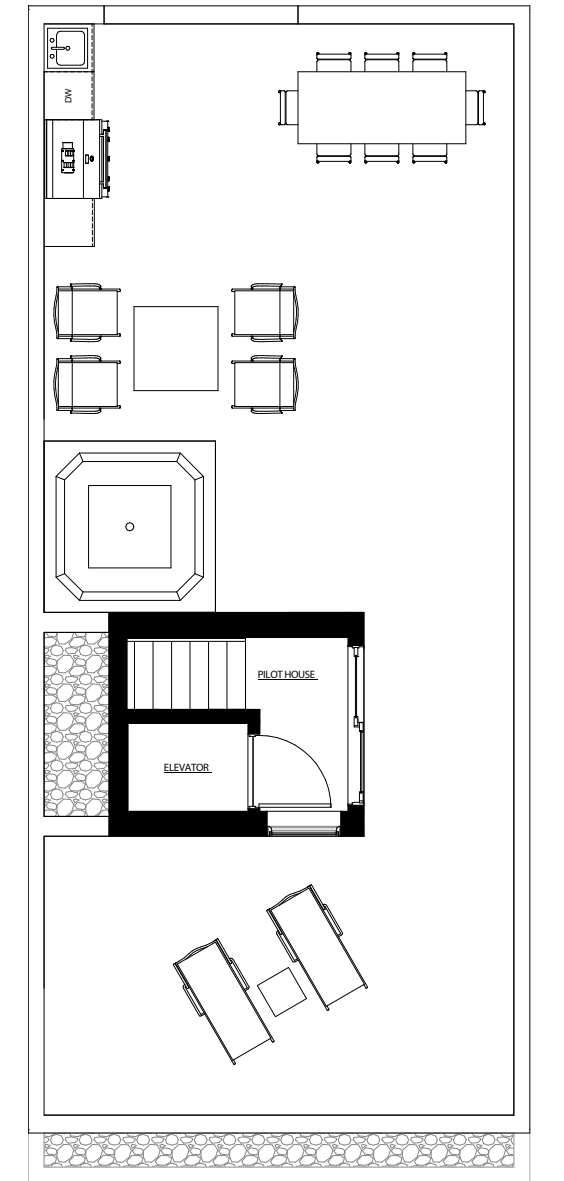
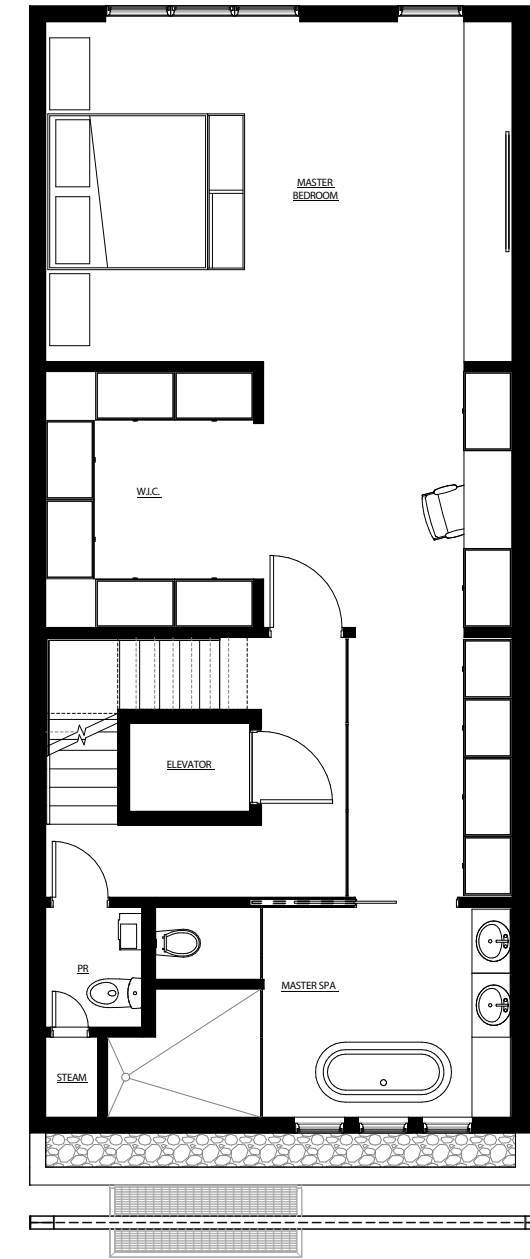
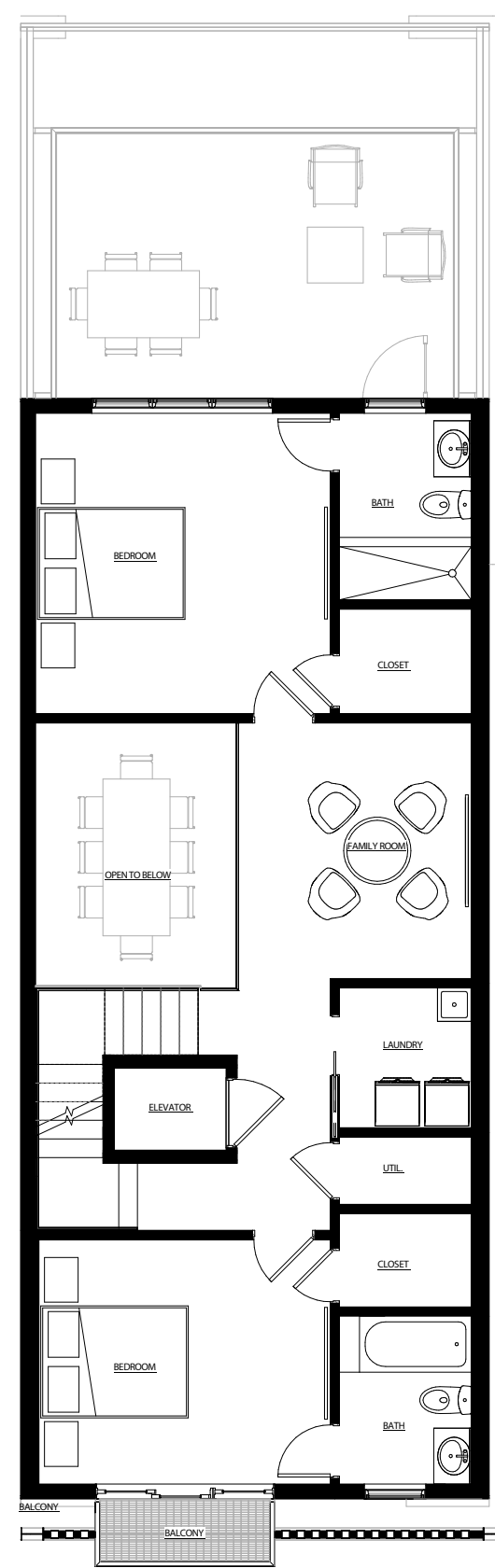
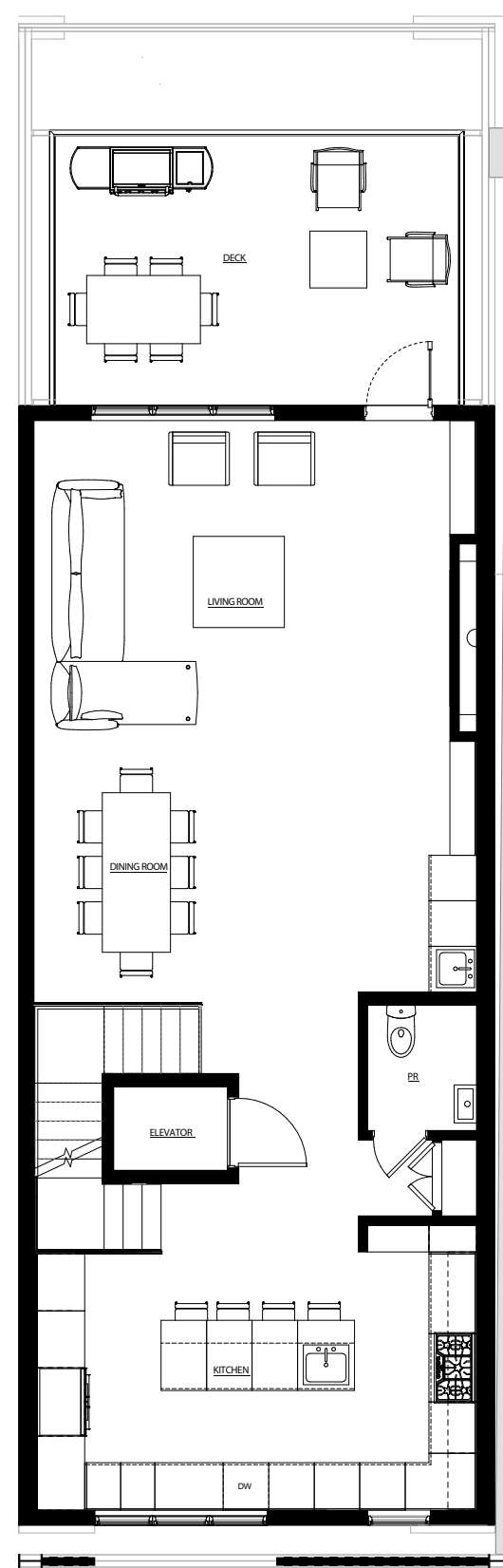
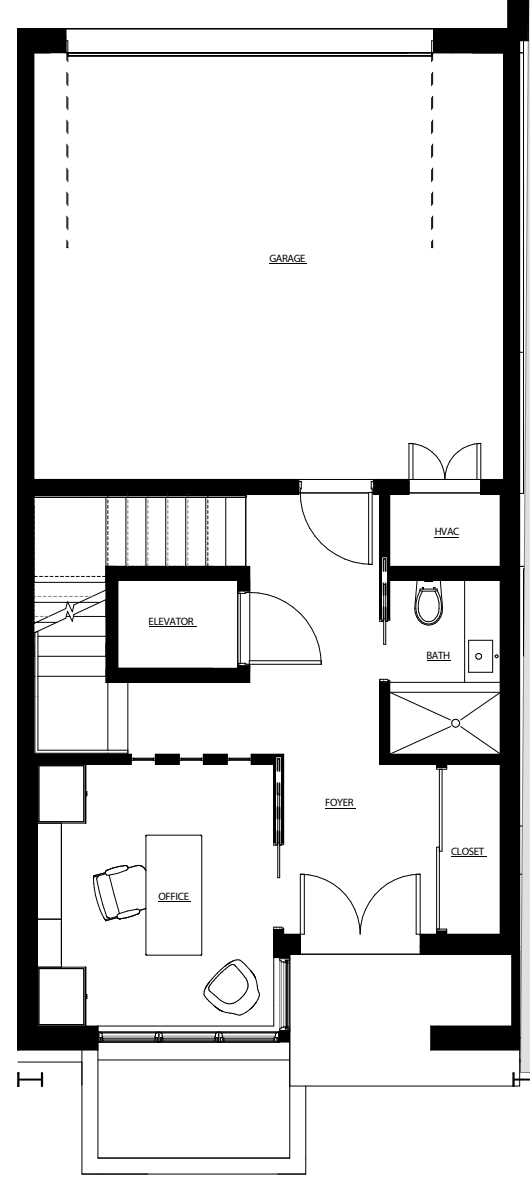
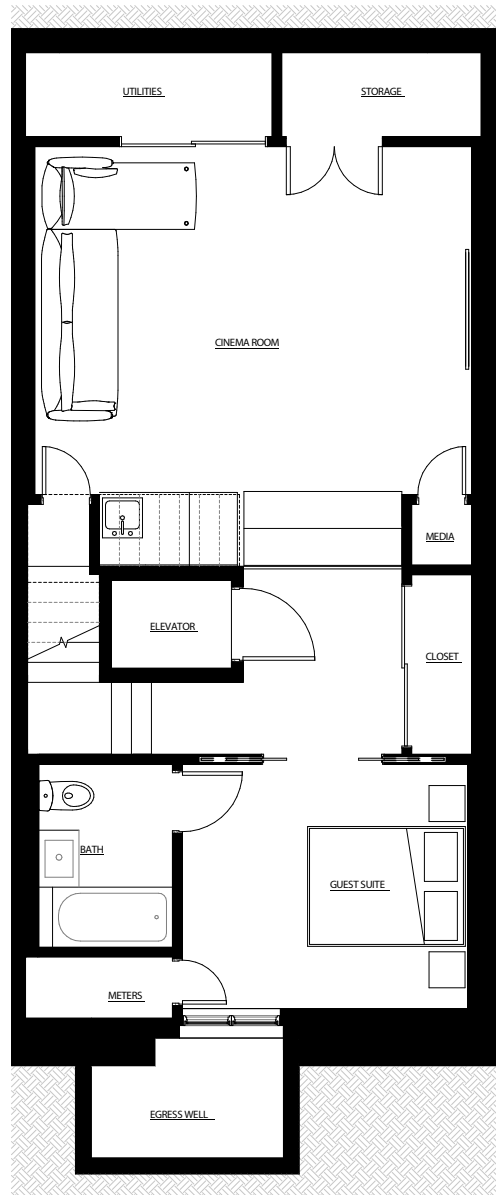


# Type A House

- 4-Story Single Family Dwelling
- 4 Bedrooms
- 5 Full Bathrooms & 2 Powder Rooms
- Finished Basement with High Ceilings
- 2-Car Garage
- 6- Stop Elevator
- Chef Kitchen
- Media Room Wet Bar
- 2nd Floor Deck: ±228 SQFT
- Roof Deck: ±790 SQFT

Gross Floor Area: ±5,002 SQFT



① Basement

② Level 1

③ Level 2

④ Level 3

⑤ Level 4

⑥ Roof

