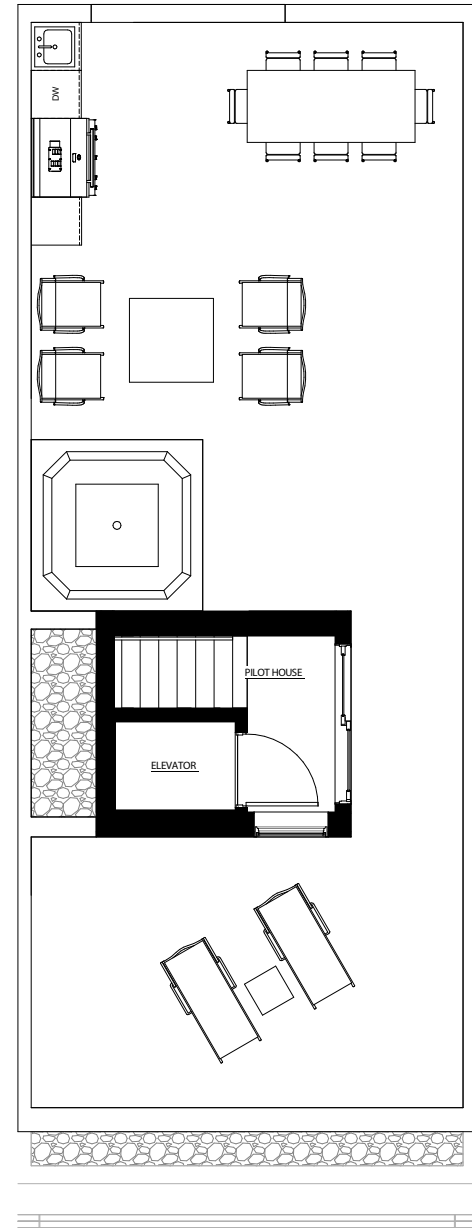
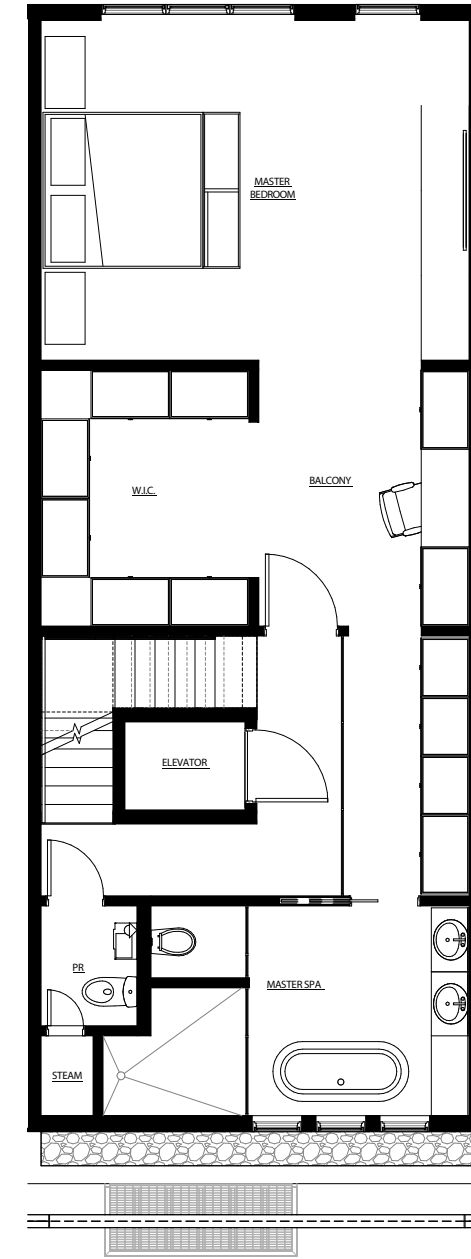
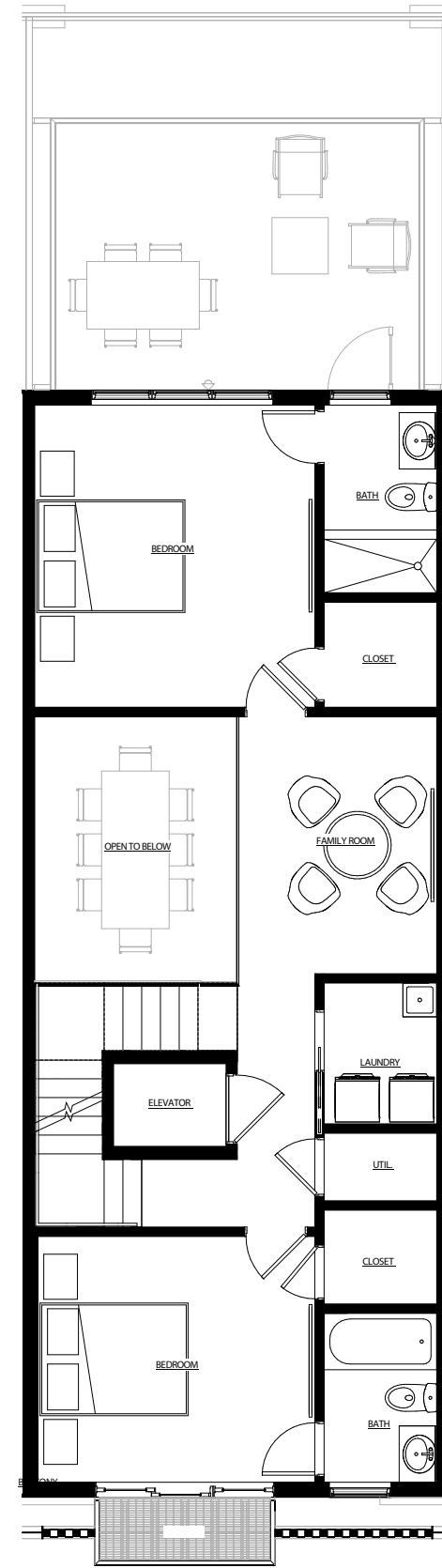
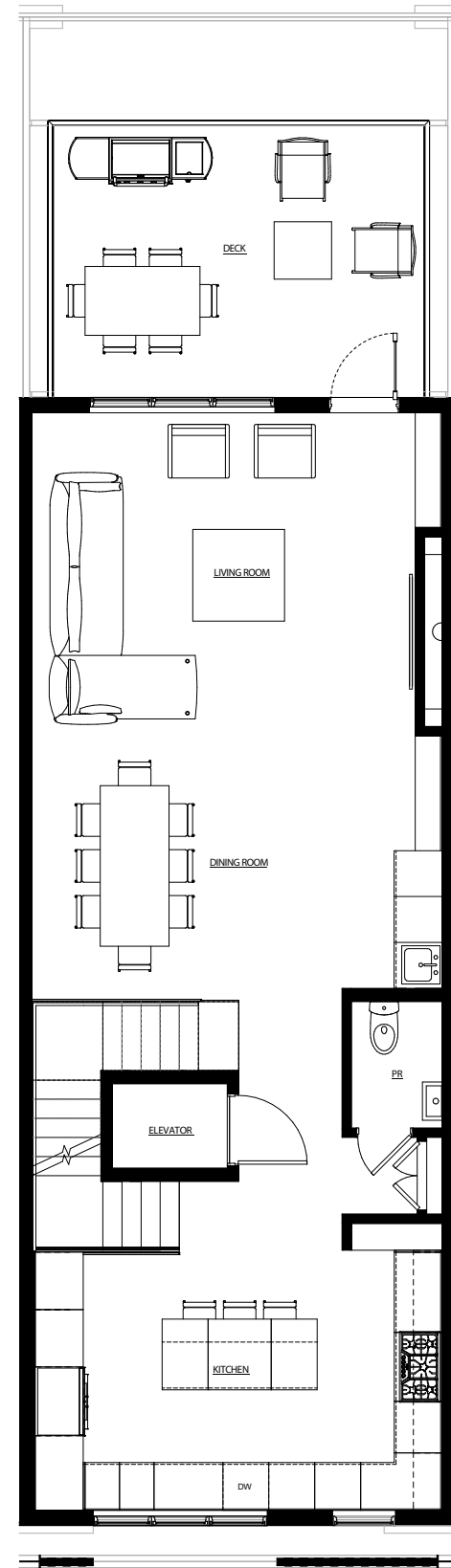
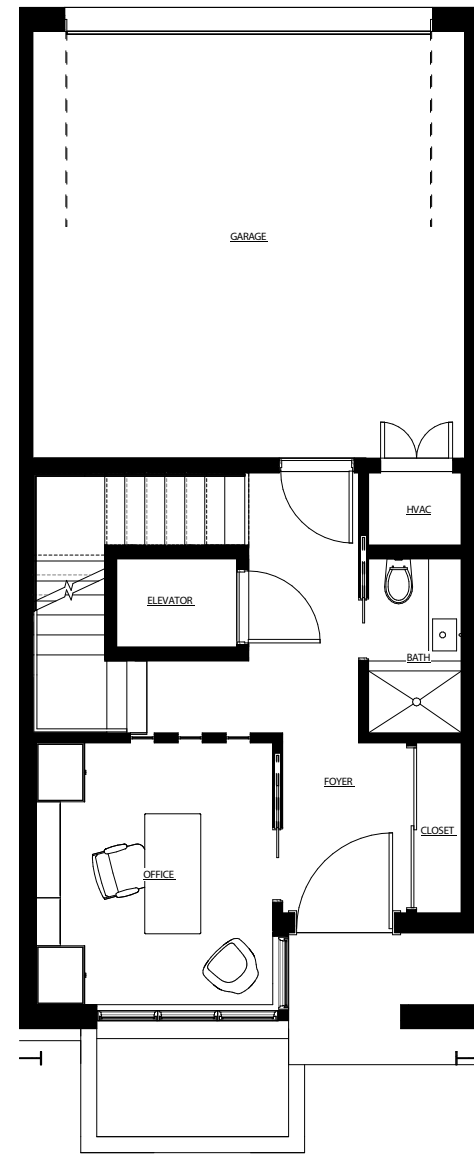
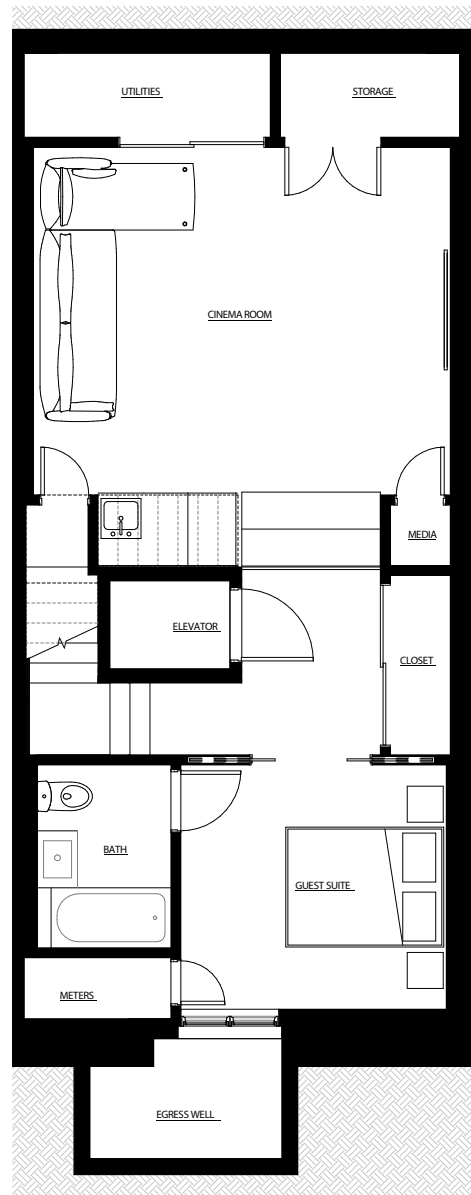


Type B House

4-Story Single Family Dwelling
 4 Bedrooms
 5 Full Bathrooms & 2 Powder Rooms
 Finished Basement with High Ceilings
 2-Car Garage
 6- Stop Elevator
 Chef Kitchen
 Media Room Wet Bar
 2nd Floor Deck: ±218 SQFT
 Roof Deck: ±754 SQFT

Gross Floor Area: ±4,600 SQFT



① Basement

② Level 1

③ Level 2

④ Level 3

⑤ Level 4

⑥ Roof